

Department of Engineering  
Tim Bryan, P.E., PTOE, County Engineer

3137 South Liberty Street, Canton, MS 39046  
Office (601) 855-5582 FAX (601) 859-5857

**MEMORANDUM**

May 11, 2026

To: Casey Brannon, Supervisor, District I  
Trey Baxter, Supervisor, District II  
Gerald Steen, Supervisor, District III  
Karl Banks, Supervisor, District IV  
Paul Griffin, Supervisor, District V

From: Tim Bryan, P.E., PTOE  
County Engineer

Re: AtmosEnergy Utility Permit  
County Road Name, North Old Canton

The Engineering Department recommends approval for AtmosEnergy Utility to install approximately 8,606 feet of 4-inch HDPE natural gas main along 12 Oaks Trace.



responsibility of the Applicant Utility to acquire an easement for their Facilities from the applicable property owner(s). Madison County in no way verifies the limits of Right-of-Way as shown on the permit application.

The Applicant Utility shall be responsible for all future maintenance and repair of the facilities installed under this permit. The Applicant Utility shall make future adjustments to, or relocate, the facilities located within road or highway right-of-way when required for road or highway widening or other road or highway construction at no cost to Madison County. The Applicant Utility shall relocate said utilities within sixty (60) days of notification by County by registered mail, return receipt requested, unless otherwise designated by the County Engineer. Further, any maintenance, repair, or construction shall be done in such a manner as to occasion no unreasonable interference with the normal flow and safety to traffic and at the expense of the utility company. When reasonable care has been taken to locate said utility facilities within the right-of-way, the Applicant Utility understands that any damages caused by routine maintenance and construction by County forces shall be borne by the Applicant Utility.

The Applicant Utility further agrees to indemnify and hold Madison County harmless for any and all claims, accidents, damages, liabilities and expenses occasioned wholly, or in part, by any act or omission of applicant, its agents or employees. In case County shall, without fault on its own part, be made a party to any litigation commenced by or against applicant, then applicant shall protect and hold County harmless, and shall pay all costs, expenses and reasonable attorney's fees incurred or paid by County in connection with said litigation.

All underground facilities shall be installed at a depth equal to or greater than 48" below the lowest adjacent grade.

All pipes carrying liquid shall be encased under County maintained roads.

WITNESS the signature of the Applicant this the \_\_\_\_\_ day of \_\_\_\_\_, 20\_\_\_\_\_.

By: \_\_\_\_\_  
(Applicant Signature)

Title: \_\_\_\_\_

**Note:** Applicant must be an employee of the Utility named in this application. The Madison County Board of Supervisors will not recognize a Contractor, Subcontractor, Agent, or Consulting Engineer as the Applicant. Utility Company shall be fully responsible for all work performed under this application.

I, or my authorized representative, have reviewed this application and determined that the drawing, sketches, and plans submitted by the Applicant meet the requirements of A Policy for The Accommodation of Utility Facilities within the Right-of-Way of all Public County Roads.

**APPROVED**

By **Tim Bryan at 1:57 pm, May 27, 2026**

Tim Bryan, P.E.  
County Engineer

AGREED TO AND APPROVED BY:

\_\_\_\_\_  
Madison County Board President

Date: \_\_\_\_\_

ENTERED INTO THE MINUTES OF THE BOARD OF SUPERVISORS OF MADISON COUNTY, MISSISSIPPI ON THIS

\_\_\_\_\_ DAY OF \_\_\_\_\_, 20\_\_\_\_\_.

**Appendix 1**

County Road Name: \_\_\_\_\_  
Beginning Location: \_\_\_\_\_ Ending Location: \_\_\_\_\_  
Length of Project: \_\_\_\_\_ Section: \_\_\_\_\_ Township: \_\_\_\_\_ Range: \_\_\_\_\_  
Description of Work: \_\_\_\_\_  
\_\_\_\_\_  
\_\_\_\_\_

County Road Name: \_\_\_\_\_  
Beginning Location: \_\_\_\_\_ Ending Location: \_\_\_\_\_  
Length of Project: \_\_\_\_\_ Section: \_\_\_\_\_ Township: \_\_\_\_\_ Range: \_\_\_\_\_  
Description of Work: \_\_\_\_\_  
\_\_\_\_\_  
\_\_\_\_\_

County Road Name: \_\_\_\_\_  
Beginning Location: \_\_\_\_\_ Ending Location: \_\_\_\_\_  
Length of Project: \_\_\_\_\_ Section: \_\_\_\_\_ Township: \_\_\_\_\_ Range: \_\_\_\_\_  
Description of Work: \_\_\_\_\_  
\_\_\_\_\_  
\_\_\_\_\_

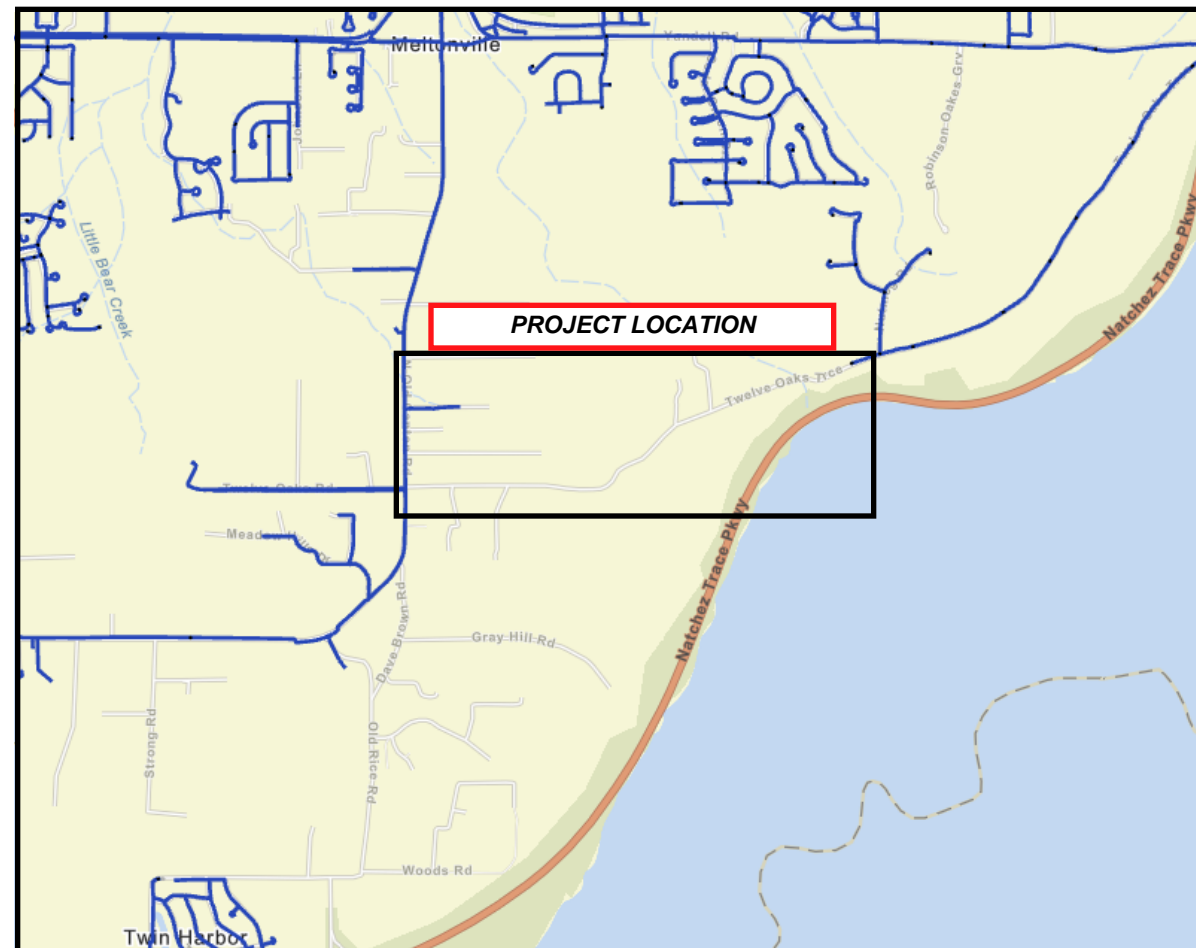
County Road Name: \_\_\_\_\_  
Beginning Location: \_\_\_\_\_ Ending Location: \_\_\_\_\_  
Length of Project: \_\_\_\_\_ Section: \_\_\_\_\_ Township: \_\_\_\_\_ Range: \_\_\_\_\_  
Description of Work: \_\_\_\_\_  
\_\_\_\_\_  
\_\_\_\_\_

County Road Name: \_\_\_\_\_  
Beginning Location: \_\_\_\_\_ Ending Location: \_\_\_\_\_  
Length of Project: \_\_\_\_\_ Section: \_\_\_\_\_ Township: \_\_\_\_\_ Range: \_\_\_\_\_  
Description of Work: \_\_\_\_\_  
\_\_\_\_\_  
\_\_\_\_\_



Know what's below.  
Call before you dig.

070.5073.SIMP.4PE.12OAKS.TR  
INSTALLING 8,606'  
OF  
4" HDPE MAIN  
070.59792  
MADISON COUNTY, MS



PROJECT MANAGER / ENGINEER  
NAME: Lake Melton  
ADDRESS: 2305 Lakeland Dr.  
PHONE: 601-941-1397  
EMAIL: lake.melton@atmosenergy.com

# Construction General Notes:

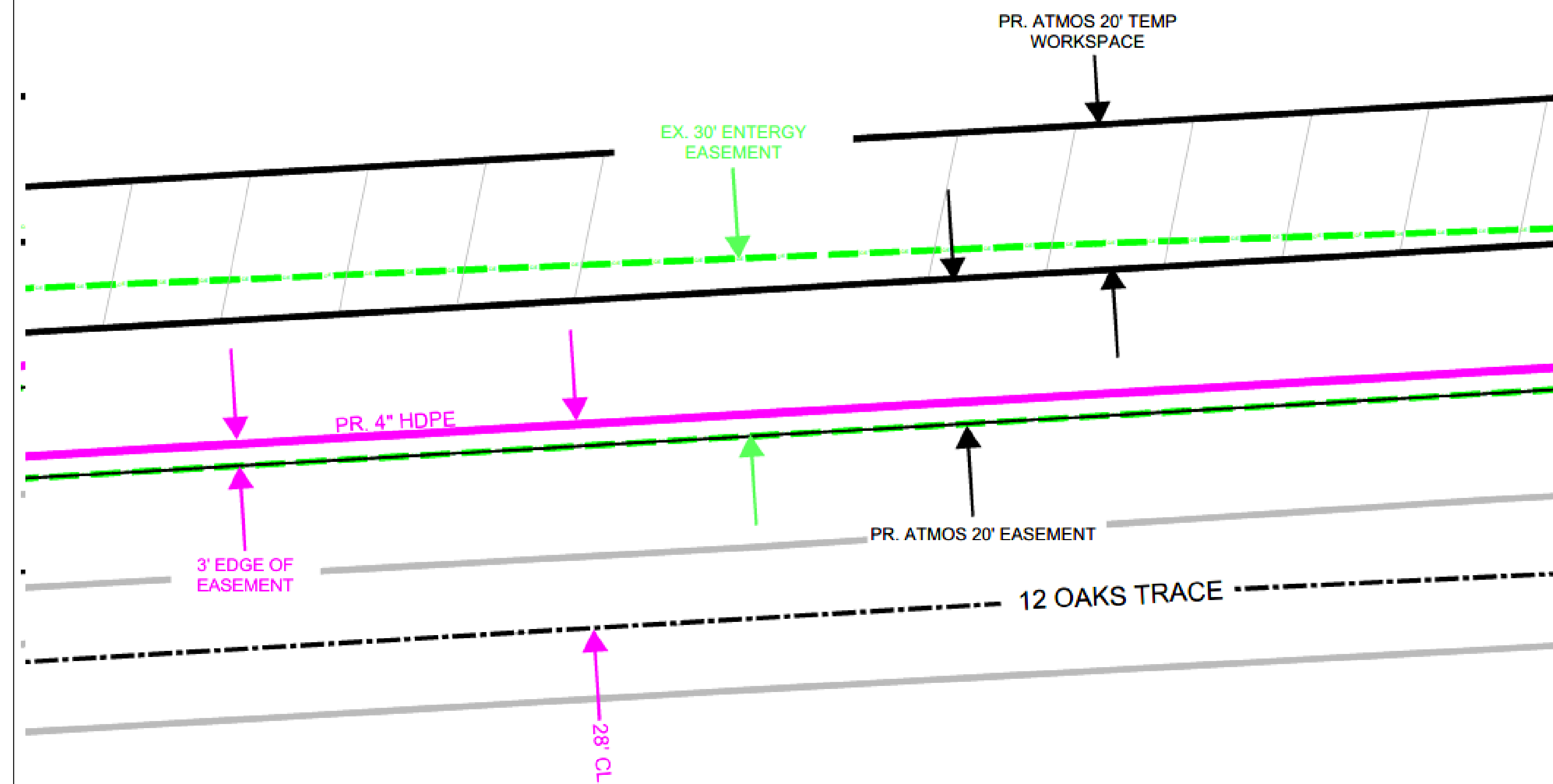
1. MAOP = 60 psig
2. Main is to be installed w/ a minimum 4 ft. cover.
3. Install #8 tracer wire with all 4" HDPE Main.
4. Pipeline warning tape to be installed at 12" above all gas main installed by open trench.
5. Install marker ball at all valve locations and E.O.M. locations.
6. Install anode every 1,000 feet or where noted on drawing.
7. Sewer main and laterals and underground utilities must be spotted during installation of main by trenchless means.
8. Pressure test all 4" HDPE main to minimum of 150 psig and a maximum of 175 psig for a minimum of eight (8) hours.
9. IF Medium density poly (MDPE) pipe (yellow or orange) is present, it will be tested to a minimum pressure of 120 psig. Test pressure cannot exceed 145 psig. Contractor shall consult the Engineer or Project Specialist prior to pressure testing this pipe.
10. Calibrated pressure chart is to be used for pressure test.
11. Purge air from the pipeline by introducing natural gas at a moderately rapid and continuous flow. The gas flow must be continued without interruption until the vented gas reaches 95% or greater gas in air concentration via a combustible gas indicator.
12. Any services replaced during construction will be purged through risers.

# Construction Procedure Order:

1. TIE IN DETAIL "A" (INTRODUCE GAS)
2. TIE IN DETAIL "B"

**NOTE:** Any deviation from the above procedure plan **MUST** be communicated with the Engineer or Project Specialist before implementation.

## TYPICAL DIMENSIONS N.T.S.



MAPS, DRAWINGS, AND ELECTRONIC DATA (PRODUCTS) ARE CONFIDENTIAL AND PROPRIETARY AND ARE CREATED FOR THE INTERNAL PURPOSES OF ATMOS ENERGY WITH NO IMPLICATION OR REPRESENTATION OF SUITABILITY OR FITNESS FOR ANY INTENDED USE OF THE RECIPIENT. ATMOS ENERGY DOES NOT WARRANT THE ACCURACY OR QUALITY OF SUCH PRODUCTS. THE LOCATIONS SHOWN ARE APPROXIMATIONS AND ARE NOT INTENDED TO SHOW EXACT LOCATIONS. PRODUCTS PROVIDED TO OTHER PARTIES BY ATMOS ENERGY ARE SOLELY FOR THE INTERNAL USE OF THE RECIPIENT, AND THE RECIPIENT AGREES NOT TO DUPLICATE OR DISTRIBUTE THE PRODUCTS OR ANY PORTION OF THE PRODUCTS TO THIRD PARTIES WITHOUT THE PRIOR WRITTEN PERMISSION OF ATMOS ENERGY. THE RECIPIENT FURTHER AGREES TO HOLD HARMLESS AND INDEMNIFY ATMOS ENERGY AGAINST ALL CLAIMS, COSTS, EXPENSES AND DAMAGES RESULTING FROM, PREDICATED UPON, OR IN ANY WAY RELATING TO ANY CLAIM, INCLUDING, BUT NOT LIMITED TO, STRICT LIABILITY, FOR PERSONAL INJURIES, DEATH, PROPERTY DAMAGE, OR ANY OTHER DAMAGES WHATSOEVER, ON ACCOUNT OF ANY PURPORTED DEFECTS, ERRORS, INCONSISTENCIES, OR INACCURACIES IN THE DATA, INFORMATION, OR OTHER PRODUCTS PROVIDED HEREUNDER.

PRELIMINARY AND  
FINAL SEALS



PROJECT #:	XXX.XXXXX
WORK ORDER #:	XXXXXXXXXX
DRAWING #:	PDXXXXX
LOCUS #:	XXXXXXX
PM:	PROJECT_MANAGER
ENG:	ENGINEER
DWG BY:	DRAWN_BY
UPDATED DATE:	04/17/26

# PROJECT OVERVIEW

FILE: 222332.DWG  
 PLOTTED: 4/28/2026 2:55 PM  
 BY: Melton, Lake

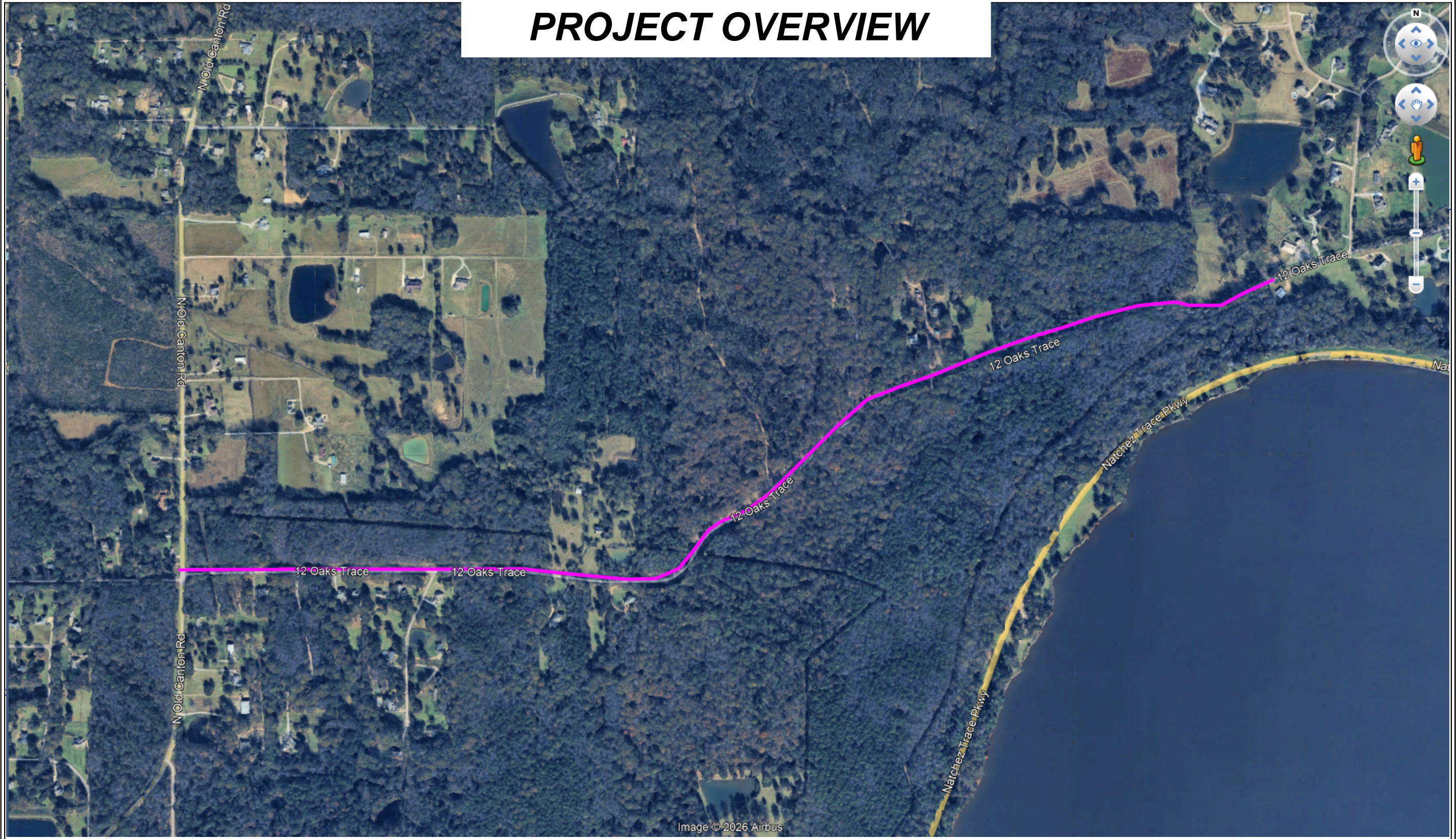


Image © 2026 Airbus

MAPS, DRAWINGS, AND ELECTRONIC DATA (PRODUCTS) ARE CONFIDENTIAL AND PROPRIETARY AND ARE CREATED FOR THE INTERNAL PURPOSES OF ATMOS ENERGY WITH NO IMPLICATION OR REPRESENTATION OF SUITABILITY OR FITNESS FOR ANY INTENDED USE OF THE RECIPIENT. ATMOS ENERGY DOES NOT WARRANT THE ACCURACY OR QUALITY OF SUCH PRODUCTS. THE LOCATIONS SHOWN ARE APPROXIMATIONS AND ARE NOT INTENDED TO SHOW EXACT LOCATIONS. PRODUCTS PROVIDED TO OTHER PARTIES BY ATMOS ENERGY ARE SOLELY FOR THE INTERNAL USE OF THE RECIPIENT, AND THE RECIPIENT AGREES NOT TO DUPLICATE OR DISTRIBUTE THE PRODUCTS OR ANY PORTION OF THE PRODUCTS TO THIRD PARTIES WITHOUT THE PRIOR WRITTEN PERMISSION OF ATMOS ENERGY. THE RECIPIENT FURTHER AGREES TO HOLD HARMLESS AND INDEMNIFY ATMOS ENERGY AGAINST ALL CLAIMS, COSTS, EXPENSES AND DAMAGES RESULTING FROM, PREDICATED UPON, OR IN ANY WAY RELATING TO ANY CLAIM, INCLUDING, BUT NOT LIMITED TO, STRICT LIABILITY, FOR PERSONAL INJURIES, DEATH, PROPERTY DAMAGE, OR ANY OTHER DAMAGES WHATSOEVER, ON ACCOUNT OF ANY PURPORTED DEFECTS, ERRORS, INCONSISTENCIES, OR INACCURACIES IN THE DATA, INFORMATION, OR OTHER PRODUCTS PROVIDED HEREUNDER.

REV.	DESCRIPTION	BY	DATE	CHKD	APPD

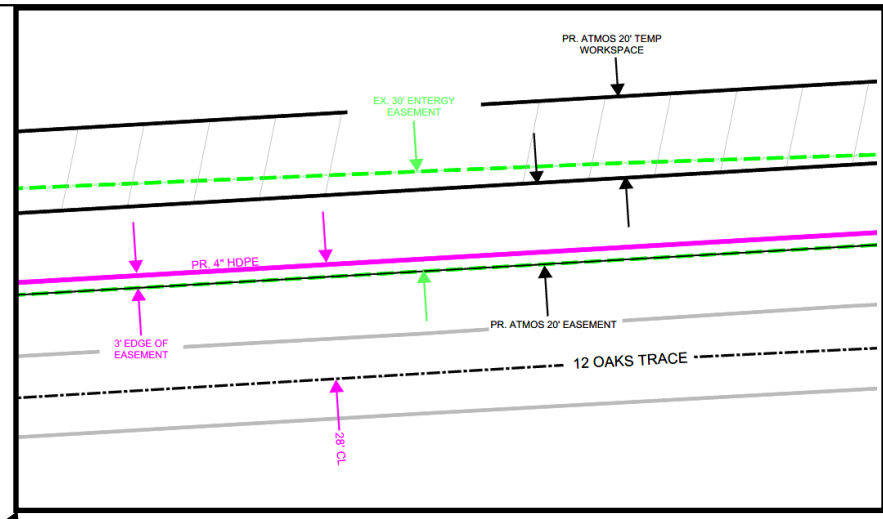
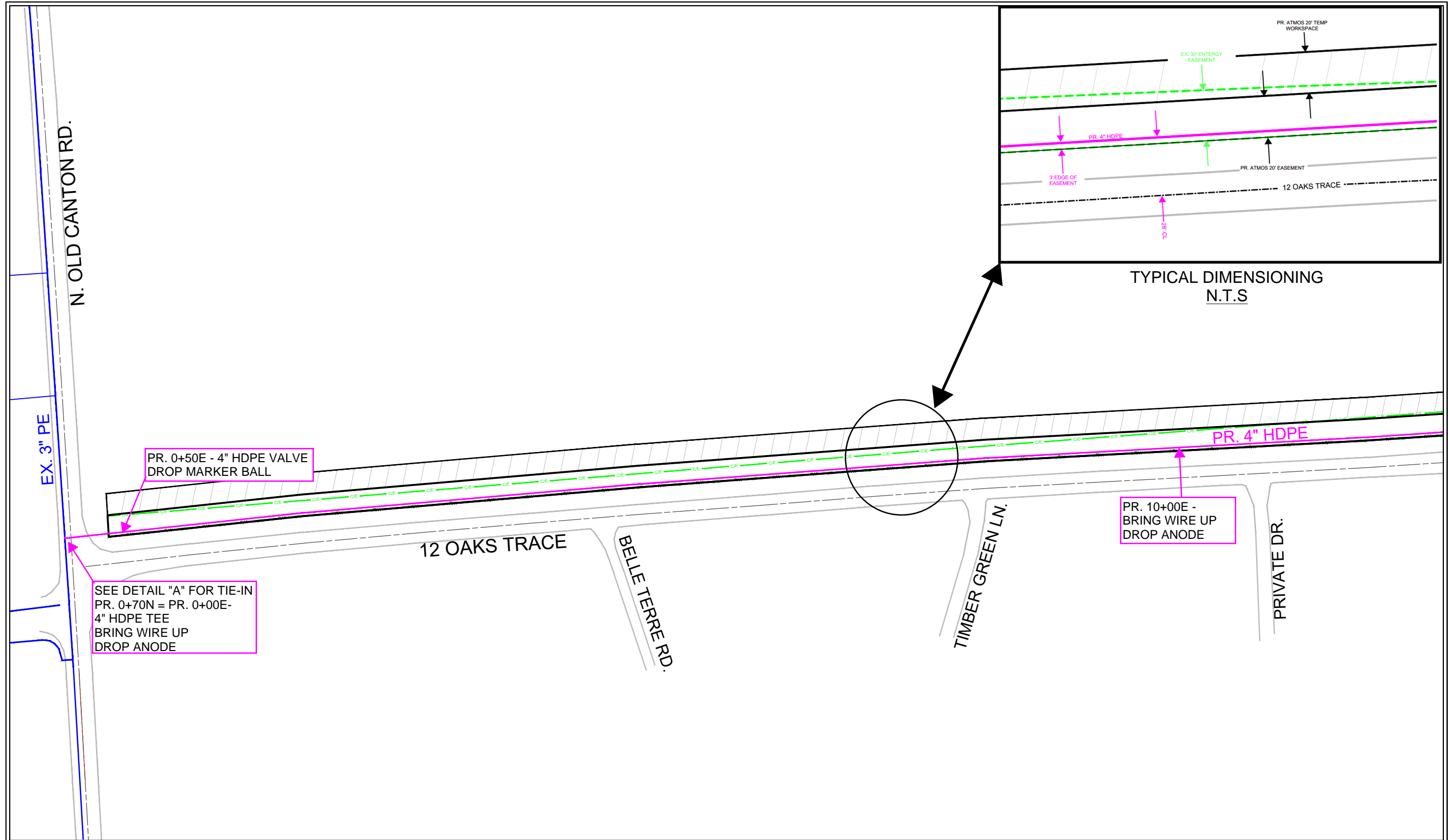
PRELIMINARY AND FINAL SEALS



PROJECT #:	-
WORK ORDER #:	222332
DRAWING #:	222332
LOCUS #:	-
PM:	-
ENG:	-
DWG BY:	LMELT24A
UPDATED DATE:	04/28/26

SHEET TITLE	-
LAYOUT DESCRIPTION	-
SHEET NUMBER	LANDSCAPE

FILE: 222332.DWG



TYPICAL DIMENSIONING  
N.T.S.

PR. 0+50E - 4" HDPE VALVE  
DROP MARKER BALL

SEE DETAIL "A" FOR TIE-IN  
PR. 0+70N = PR. 0+00E-  
4" HDPE TEE  
BRING WIRE UP  
DROP ANODE

PR. 10+00E -  
BRING WIRE UP  
DROP ANODE

N. OLD CANTON RD.  
EX. 3" PE

12 OAKS TRACE

BELLE TERRE RD.

TIMBER GREEN LN.

PRIVATE DR.

MAPS, DRAWINGS, AND ELECTRONIC DATA (PRODUCTS) ARE CONFIDENTIAL AND PROPRIETARY AND ARE CREATED FOR THE INTERNAL PURPOSES OF ATMOS ENERGY WITH NO IMPLICATION OR REPRESENTATION OF SUITABILITY OR FITNESS FOR ANY INTENDED USE OF THE RECIPIENT. ATMOS ENERGY DOES NOT WARRANT THE ACCURACY OR QUALITY OF SUCH PRODUCTS. THE LOCATIONS SHOWN ARE APPROXIMATIONS AND ARE NOT INTENDED TO SHOW EXACT LOCATIONS. PRODUCTS PROVIDED TO OTHER PARTIES BY ATMOS ENERGY ARE SOLELY FOR THE INTERNAL USE OF THE RECIPIENT, AND THE RECIPIENT AGREES NOT TO DUPLICATE OR DISTRIBUTE THE PRODUCTS OR ANY PORTION OF THE PRODUCTS TO THIRD PARTIES WITHOUT THE PRIOR WRITTEN PERMISSION OF ATMOS ENERGY. THE RECIPIENT FURTHER AGREES TO HOLD HARMLESS AND INDEMNIFY ATMOS ENERGY AGAINST ALL CLAIMS, COSTS, EXPENSES AND DAMAGES RESULTING FROM, PREDICATED UPON, OR IN ANY WAY RELATING TO ANY CLAIM, INCLUDING, BUT NOT LIMITED TO, STRICT LIABILITY, FOR PERSONAL INJURIES, DEATH, PROPERTY DAMAGE, OR ANY OTHER DAMAGES WHATSOEVER, ON ACCOUNT OF ANY PURPORTED DEFECTS, ERRORS, INCONSISTENCIES, OR INACCURACIES IN THE DATA, INFORMATION, OR OTHER PRODUCTS PROVIDED HEREUNDER.

REV.	DESCRIPTION	BY	DATE	CHKD	APPD
-	-	-	-	-	-
-	-	-	-	-	-
-	-	-	-	-	-
-	-	-	-	-	-
-	-	-	-	-	-
-	-	-	-	-	-
-	-	-	-	-	-
-	-	-	-	-	-
-	-	-	-	-	-
-	-	-	-	-	-

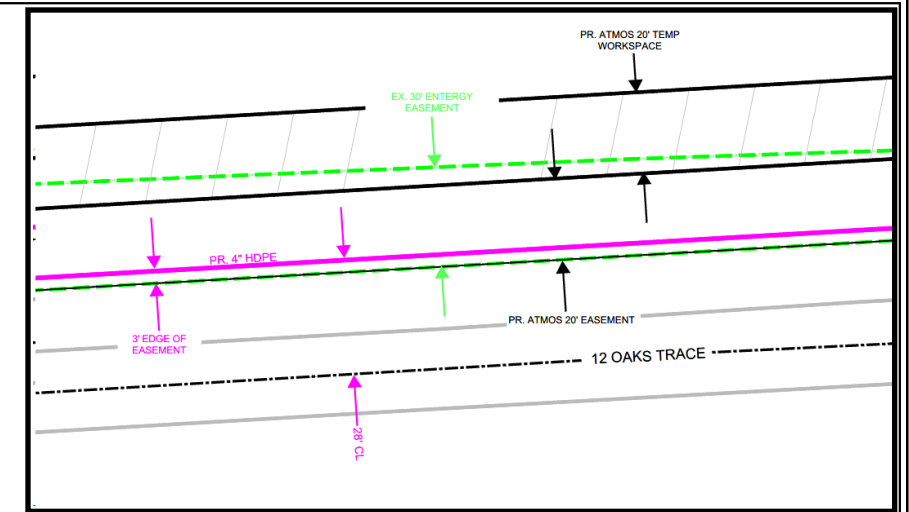
PRELIMINARY AND  
FINAL SEALS



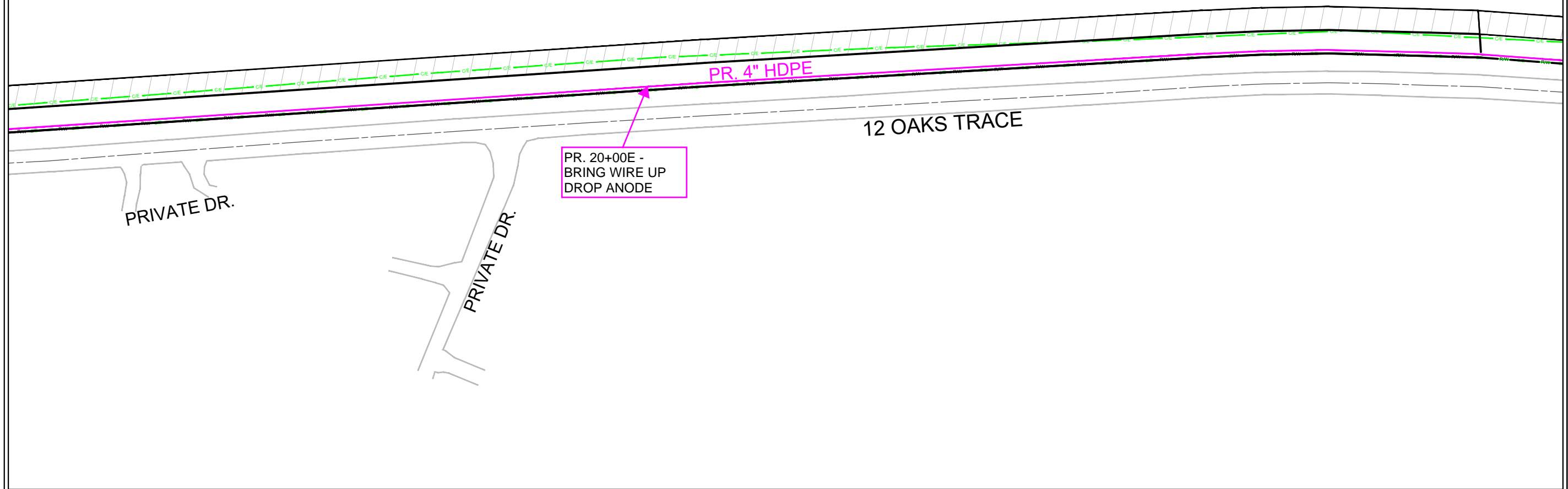
PROJECT #:	-
WORK ORDER #:	222332
DRAWING #:	222332
LOCUS #:	-
PM:	-
ENG:	-
DWG BY:	LMELT24A
UPDATED DATE:	04/27/26

SHEET TITLE	-
LAYOUT DESCRIPTION	-
SHEET NUMBER	LANDSCAPE

FILE: 222332.DWG  
 PLOTTED: 4/28/2026 10:33 AM  
 BY: Melton, Lake



TYPICAL DIMENSIONING  
 N.T.S.



PR. 20+00E -  
 BRING WIRE UP  
 DROP ANODE

MAPS, DRAWINGS, AND ELECTRONIC DATA (PRODUCTS) ARE CONFIDENTIAL AND PROPRIETARY AND ARE CREATED FOR THE INTERNAL PURPOSES OF ATMOS ENERGY WITH NO IMPLICATION OR REPRESENTATION OF SUITABILITY OR FITNESS FOR ANY INTENDED USE OF THE RECIPIENT. ATMOS ENERGY DOES NOT WARRANT THE ACCURACY OR QUALITY OF SUCH PRODUCTS. THE LOCATIONS SHOWN ARE APPROXIMATIONS AND ARE NOT INTENDED TO SHOW EXACT LOCATIONS. PRODUCTS PROVIDED TO OTHER PARTIES BY ATMOS ENERGY ARE SOLELY FOR THE INTERNAL USE OF THE RECIPIENT, AND THE RECIPIENT AGREES NOT TO DUPLICATE OR DISTRIBUTE THE PRODUCTS OR ANY PORTION OF THE PRODUCTS TO THIRD PARTIES WITHOUT THE PRIOR WRITTEN PERMISSION OF ATMOS ENERGY. THE RECIPIENT FURTHER AGREES TO HOLD HARMLESS AND INDEMNIFY ATMOS ENERGY AGAINST ALL CLAIMS, COSTS, EXPENSES AND DAMAGES RESULTING FROM, PREDICATED UPON, OR IN ANY WAY RELATING TO ANY CLAIM, INCLUDING, BUT NOT LIMITED TO, STRICT LIABILITY, FOR PERSONAL INJURIES, DEATH, PROPERTY DAMAGE, OR ANY OTHER DAMAGES WHATSOEVER, ON ACCOUNT OF ANY PURPORTED DEFECTS, ERRORS, INCONSISTENCIES, OR INACCURACIES IN THE DATA, INFORMATION, OR OTHER PRODUCTS PROVIDED HEREUNDER.

REV.	DESCRIPTION	BY	DATE	CHK'D	APP'D
-	-	-	-	-	-
-	-	-	-	-	-
-	-	-	-	-	-
-	-	-	-	-	-
-	-	-	-	-	-
-	-	-	-	-	-
-	-	-	-	-	-
-	-	-	-	-	-
-	-	-	-	-	-

PRELIMINARY AND  
 FINAL SEALS

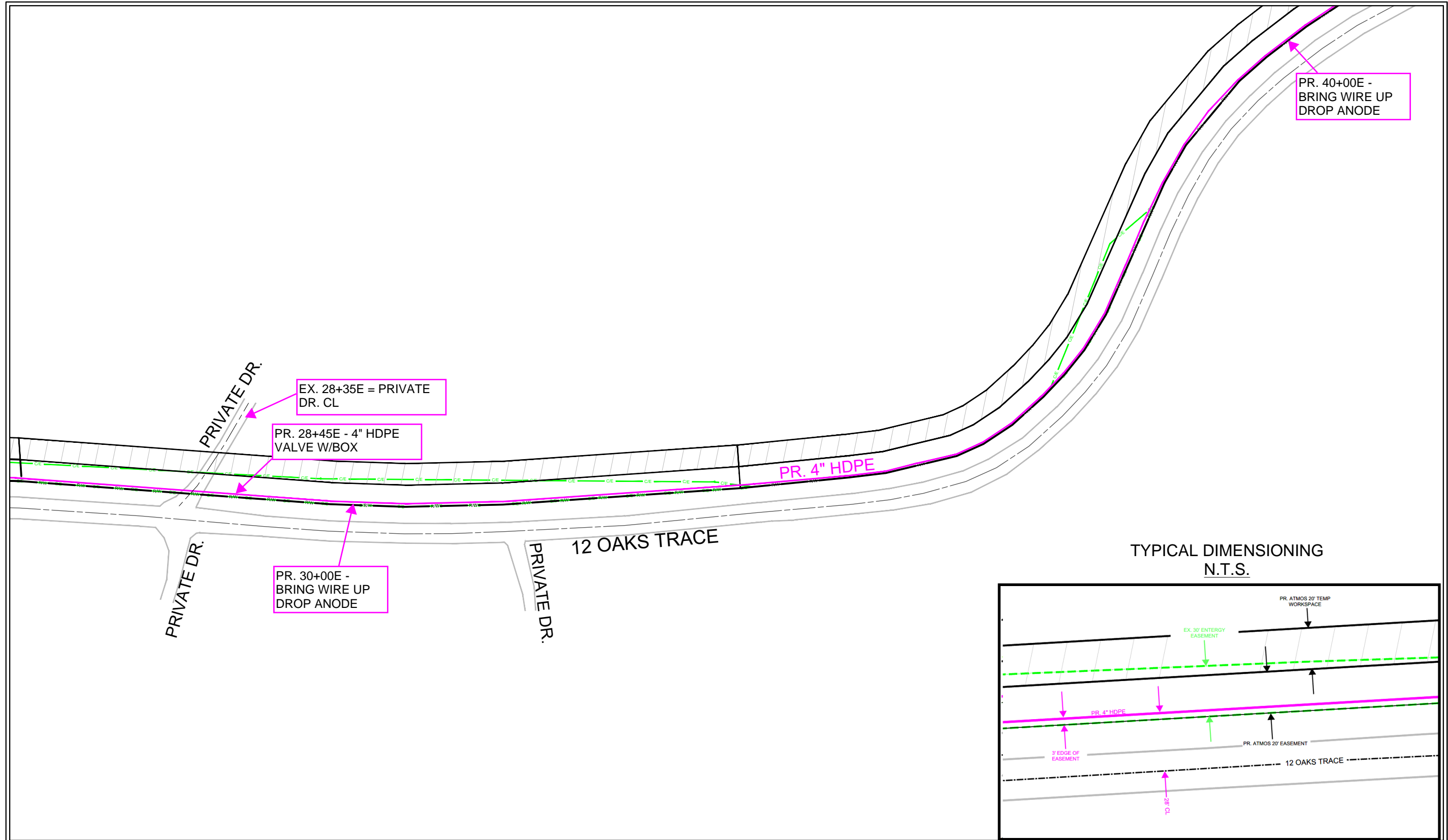


PROJECT #:	-
WORK ORDER #:	222332
DRAWING #:	222332
LOCUS #:	-
PM:	-
ENG:	-
DWG BY:	LMELT24A
UPDATED DATE:	04/27/26

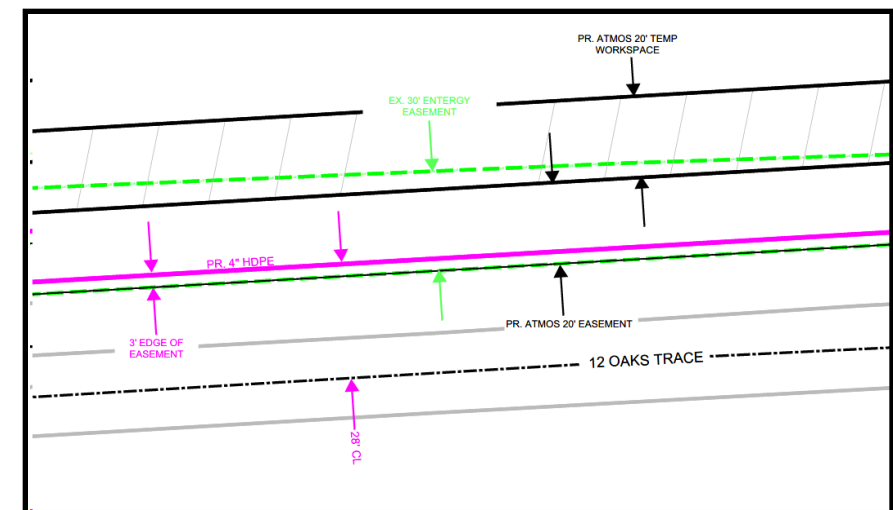
SHEET TITLE	-
LAYOUT DESCRIPTION	-
SHEET NUMBER	LANDSCAPE

FILE: 222332.DWG

BY: Melton, Lake  
 PLOTTED: 4/28/2026 10:33 AM



TYPICAL DIMENSIONING  
 N.T.S.



MAPS, DRAWINGS, AND ELECTRONIC DATA (PRODUCTS) ARE CONFIDENTIAL AND PROPRIETARY AND ARE CREATED FOR THE INTERNAL PURPOSES OF ATMOS ENERGY WITH NO IMPLICATION OR REPRESENTATION OF SUITABILITY OR FITNESS FOR ANY INTENDED USE OF THE RECIPIENT. ATMOS ENERGY DOES NOT WARRANT THE ACCURACY OR QUALITY OF SUCH PRODUCTS. THE LOCATIONS SHOWN ARE APPROXIMATIONS AND ARE NOT INTENDED TO SHOW EXACT LOCATIONS. PRODUCTS PROVIDED TO OTHER PARTIES BY ATMOS ENERGY ARE SOLELY FOR THE INTERNAL USE OF THE RECIPIENT, AND THE RECIPIENT AGREES NOT TO DUPLICATE OR DISTRIBUTE THE PRODUCTS OR ANY PORTION OF THE PRODUCTS TO THIRD PARTIES WITHOUT THE PRIOR WRITTEN PERMISSION OF ATMOS ENERGY. THE RECIPIENT FURTHER AGREES TO HOLD HARMLESS AND INDEMNIFY ATMOS ENERGY AGAINST ALL CLAIMS, COSTS, EXPENSES AND DAMAGES RESULTING FROM, PREDICATED UPON, OR IN ANY WAY RELATING TO ANY CLAIM, INCLUDING, BUT NOT LIMITED TO, STRICT LIABILITY, FOR PERSONAL INJURIES, DEATH, PROPERTY DAMAGE, OR ANY OTHER DAMAGES WHATSOEVER, ON ACCOUNT OF ANY PURPORTED DEFECTS, ERRORS, INCONSISTENCIES, OR INACCURACIES IN THE DATA, INFORMATION, OR OTHER PRODUCTS PROVIDED HEREUNDER.

REV.	DESCRIPTION	BY	DATE	CHKD	APPD
-	-	-	-	-	-
-	-	-	-	-	-
-	-	-	-	-	-
-	-	-	-	-	-
-	-	-	-	-	-
-	-	-	-	-	-
-	-	-	-	-	-
-	-	-	-	-	-
-	-	-	-	-	-

PRELIMINARY AND FINAL SEALS



PROJECT #:  
 WORK ORDER #: 222332  
 DRAWING #: 222332  
 LOCUS #:  
 PM:  
 ENG:  
 DWG BY: LMELT24A  
 UPDATED DATE: 04/27/26

SHEET TITLE  
 LAYOUT DESCRIPTION  
 SHEET NUMBER  
 LANDSCAPE

FILE: 222332.DWG

BY: Melton, Lake

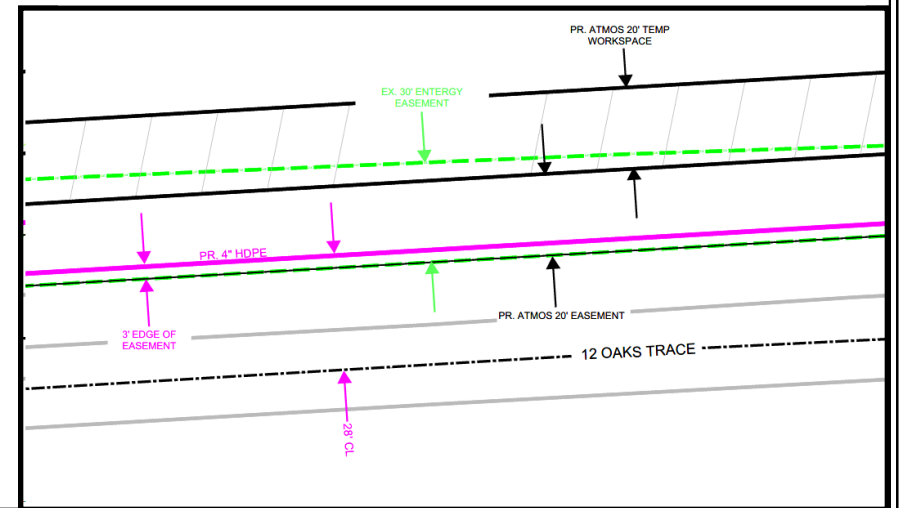
PLOTTED: 4/28/2026 10:33 AM

PR. 50+00E -  
BRING WIRE UP  
DROP ANODE

PR. 4" HDPE

12 OAKS TRACE

TYPICAL DIMENSIONING  
N.T.S.



MAPS, DRAWINGS, AND ELECTRONIC DATA (PRODUCTS) ARE CONFIDENTIAL AND PROPRIETARY AND ARE CREATED FOR THE INTERNAL PURPOSES OF ATMOS ENERGY WITH NO IMPLICATION OR REPRESENTATION OF SUITABILITY OR FITNESS FOR ANY INTENDED USE OF THE RECIPIENT. ATMOS ENERGY DOES NOT WARRANT THE ACCURACY OR QUALITY OF SUCH PRODUCTS. THE LOCATIONS SHOWN ARE APPROXIMATIONS AND ARE NOT INTENDED TO SHOW EXACT LOCATIONS. PRODUCTS PROVIDED TO OTHER PARTIES BY ATMOS ENERGY ARE SOLELY FOR THE INTERNAL USE OF THE RECIPIENT, AND THE RECIPIENT AGREES NOT TO DUPLICATE OR DISTRIBUTE THE PRODUCTS OR ANY PORTION OF THE PRODUCTS TO THIRD PARTIES WITHOUT THE PRIOR WRITTEN PERMISSION OF ATMOS ENERGY. THE RECIPIENT FURTHER AGREES TO HOLD HARMLESS AND INDEMNIFY ATMOS ENERGY AGAINST ALL CLAIMS, COSTS, EXPENSES AND DAMAGES RESULTING FROM, PREDICATED UPON, OR IN ANY WAY RELATING TO ANY CLAIM, INCLUDING, BUT NOT LIMITED TO, STRICT LIABILITY, FOR PERSONAL INJURIES, DEATH, PROPERTY DAMAGE, OR ANY OTHER DAMAGES WHATSOEVER, ON ACCOUNT OF ANY PURPORTED DEFECTS, ERRORS, INCONSISTENCIES, OR INACCURACIES IN THE DATA, INFORMATION, OR OTHER PRODUCTS PROVIDED HEREUNDER.

REV.	DESCRIPTION	BY	DATE	CHKD	APPD
-	-	-	-	-	-
-	-	-	-	-	-
-	-	-	-	-	-
-	-	-	-	-	-
-	-	-	-	-	-
-	-	-	-	-	-
-	-	-	-	-	-
-	-	-	-	-	-
-	-	-	-	-	-

PRELIMINARY AND  
FINAL SEALS

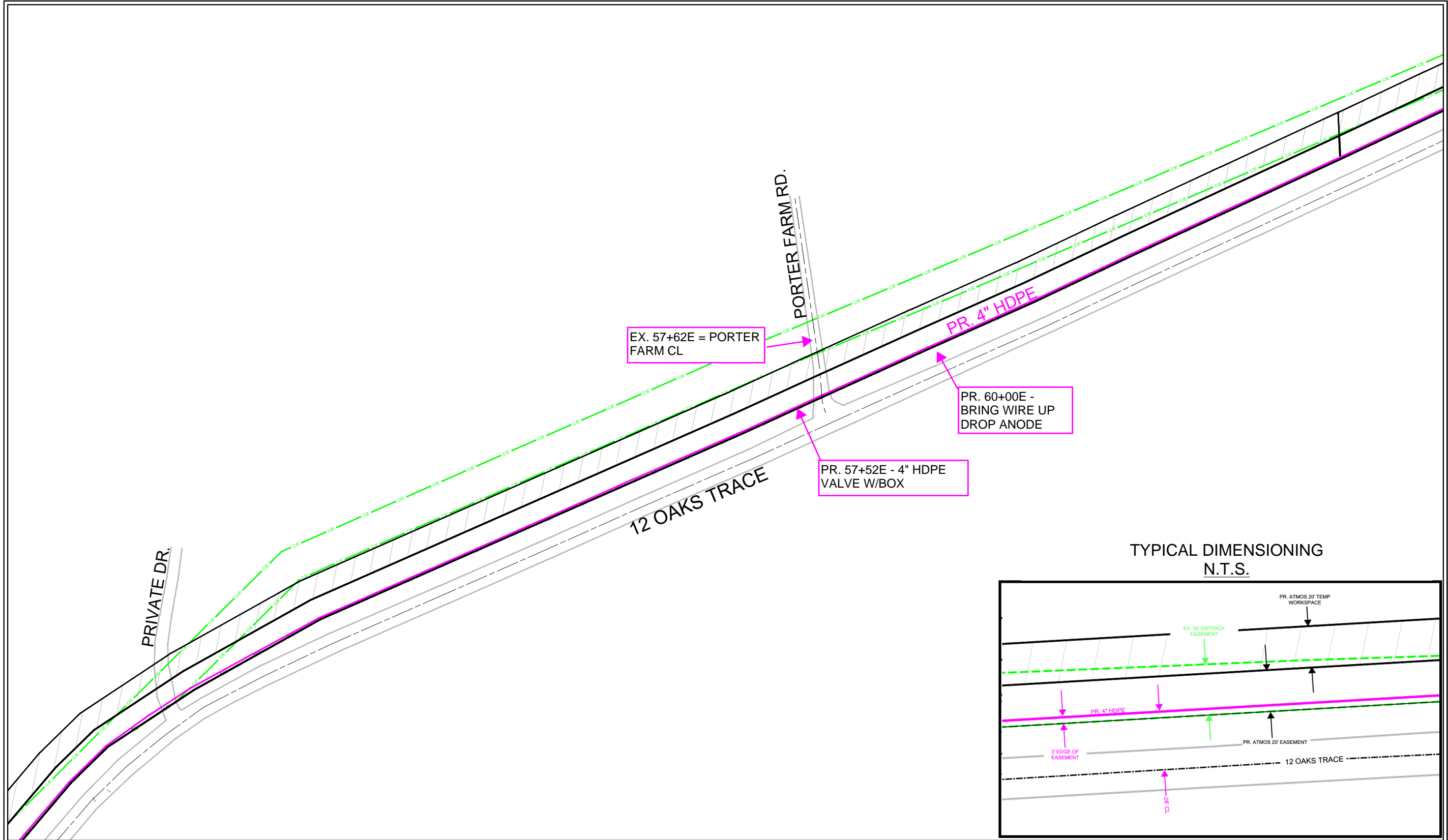


PROJECT #:	-
WORK ORDER #:	222332
DRAWING #:	222332
LOCUS #:	-
PM:	-
ENG:	-
DWG BY:	LMELT24A
UPDATED DATE:	04/27/26

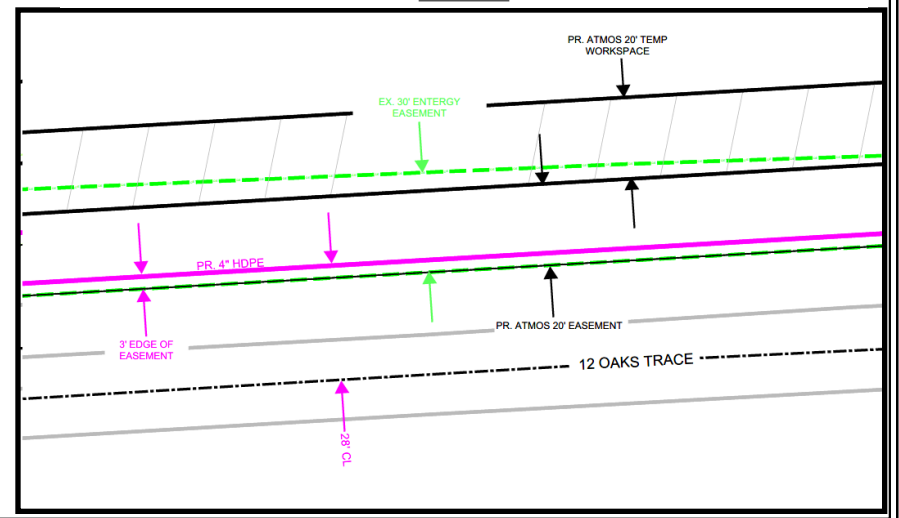
SHEET TITLE	-
LAYOUT DESCRIPTION	-
SHEET NUMBER	LANDSCAPE

FILE: 222332.DWG

FILE: 222332.DWG PLOTTED: 4/28/2026 10:34 AM BY: Melton, Lake



TYPICAL DIMENSIONING  
N.T.S.



MAPS, DRAWINGS, AND ELECTRONIC DATA (PRODUCTS) ARE CONFIDENTIAL AND PROPRIETARY AND ARE CREATED FOR THE INTERNAL PURPOSES OF ATMOS ENERGY WITH NO IMPLICATION OR REPRESENTATION OF SUITABILITY OR FITNESS FOR ANY INTENDED USE OF THE RECIPIENT. ATMOS ENERGY DOES NOT WARRANT THE ACCURACY OR QUALITY OF SUCH PRODUCTS. THE LOCATIONS SHOWN ARE APPROXIMATIONS AND ARE NOT INTENDED TO SHOW EXACT LOCATIONS. PRODUCTS PROVIDED TO OTHER PARTIES BY ATMOS ENERGY ARE SOLELY FOR THE INTERNAL USE OF THE RECIPIENT, AND THE RECIPIENT AGREES NOT TO DUPLICATE OR DISTRIBUTE THE PRODUCTS OR ANY PORTION OF THE PRODUCTS TO THIRD PARTIES WITHOUT THE PRIOR WRITTEN PERMISSION OF ATMOS ENERGY. THE RECIPIENT FURTHER AGREES TO HOLD HARMLESS AND INDEMNIFY ATMOS ENERGY AGAINST ALL CLAIMS, COSTS, EXPENSES AND DAMAGES RESULTING FROM, PREDICATED UPON, OR IN ANY WAY RELATING TO ANY CLAIM, INCLUDING, BUT NOT LIMITED TO, STRICT LIABILITY, FOR PERSONAL INJURIES, DEATH, PROPERTY DAMAGE, OR ANY OTHER DAMAGES WHATSOEVER, ON ACCOUNT OF ANY PURPORTED DEFECTS, ERRORS, INCONSISTENCIES, OR INACCURACIES IN THE DATA, INFORMATION, OR OTHER PRODUCTS PROVIDED HEREUNDER.

REV.	DESCRIPTION	BY	DATE	CHK'D	APP'D

PRELIMINARY AND FINAL SEALS

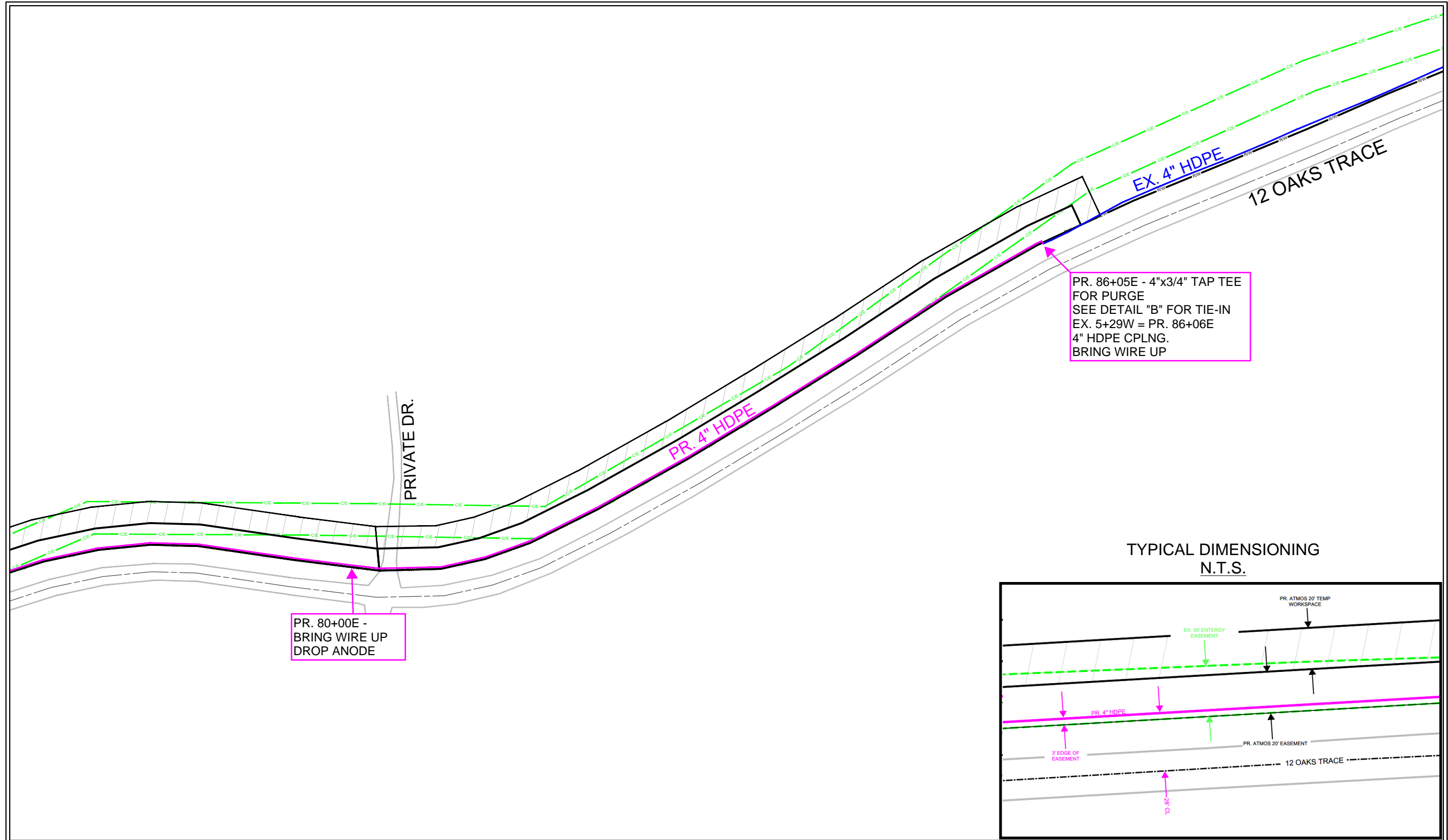


PROJECT #: -  
 WORK ORDER #: 222332  
 DRAWING #: 222332  
 LOCUS #: -  
 PM: -  
 ENG: -  
 DWG BY: LMELT24A  
 UPDATED DATE: 04/27/26

SHEET TITLE  
 -  
 -  
 -  
 LAYOUT DESCRIPTION  
 -  
 SHEET NUMBER  
 LANDSCAPE

FILE: 222332.DWG

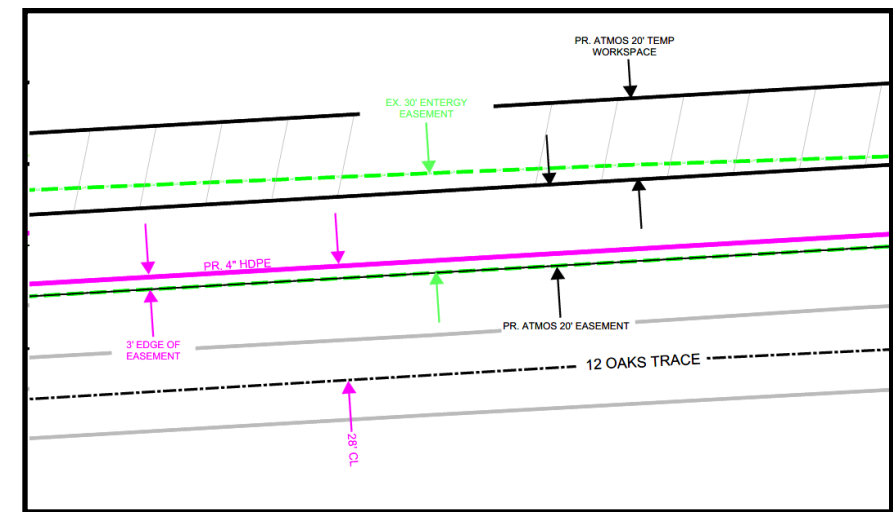




PR. 80+00E -  
BRING WIRE UP  
DROP ANODE

PR. 86+05E - 4"x3/4" TAP TEE  
FOR PURGE  
SEE DETAIL "B" FOR TIE-IN  
EX. 5+29W = PR. 86+06E  
4" HDPE CPLNG.  
BRING WIRE UP

TYPICAL DIMENSIONING  
N.T.S.



MAPS, DRAWINGS, AND ELECTRONIC DATA (PRODUCTS) ARE CONFIDENTIAL AND PROPRIETARY AND ARE CREATED FOR THE INTERNAL PURPOSES OF ATMOS ENERGY WITH NO IMPLICATION OR REPRESENTATION OF SUITABILITY OR FITNESS FOR ANY INTENDED USE OF THE RECIPIENT. ATMOS ENERGY DOES NOT WARRANT THE ACCURACY OR QUALITY OF SUCH PRODUCTS. THE LOCATIONS SHOWN ARE APPROXIMATIONS AND ARE NOT INTENDED TO SHOW EXACT LOCATIONS. PRODUCTS PROVIDED TO OTHER PARTIES BY ATMOS ENERGY ARE SOLELY FOR THE INTERNAL USE OF THE RECIPIENT, AND THE RECIPIENT AGREES NOT TO DUPLICATE OR DISTRIBUTE THE PRODUCTS OR ANY PORTION OF THE PRODUCTS TO THIRD PARTIES WITHOUT THE PRIOR WRITTEN PERMISSION OF ATMOS ENERGY. THE RECIPIENT FURTHER AGREES TO HOLD HARMLESS AND INDEMNIFY ATMOS ENERGY AGAINST ALL CLAIMS, COSTS, EXPENSES AND DAMAGES RESULTING FROM, PREDICATED UPON, OR IN ANY WAY RELATING TO ANY CLAIM, INCLUDING, BUT NOT LIMITED TO, STRICT LIABILITY, FOR PERSONAL INJURIES, DEATH, PROPERTY DAMAGE, OR ANY OTHER DAMAGES WHATSOEVER, ON ACCOUNT OF ANY PURPORTED DEFECTS, ERRORS, INCONSISTENCIES, OR INACCURACIES IN THE DATA, INFORMATION, OR OTHER PRODUCTS PROVIDED HEREUNDER.

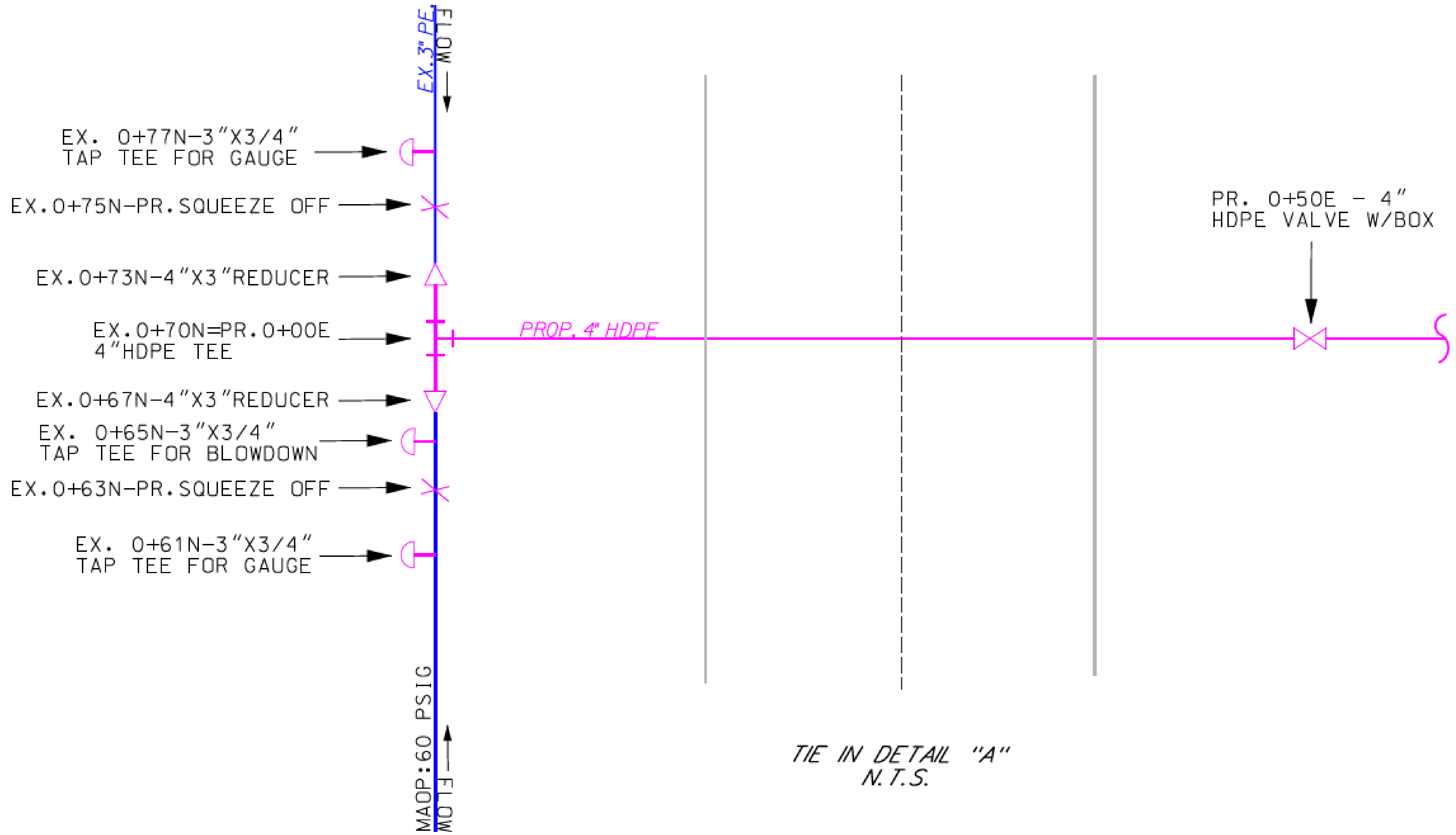
REV.	DESCRIPTION	BY	DATE	CHK'D	APP'D
-	-	-	-	-	-
-	-	-	-	-	-
-	-	-	-	-	-
-	-	-	-	-	-
-	-	-	-	-	-
-	-	-	-	-	-
-	-	-	-	-	-
-	-	-	-	-	-
-	-	-	-	-	-

PRELIMINARY AND FINAL SEALS



PROJECT #:	-
WORK ORDER #:	222332
DRAWING #:	222332
LOCUS #:	-
PM:	-
ENG:	-
DWG BY:	LMELT24A
UPDATED DATE:	04/27/26

SHEET TITLE	-
LAYOUT DESCRIPTION	-
SHEET NUMBER	LANDSCAPE



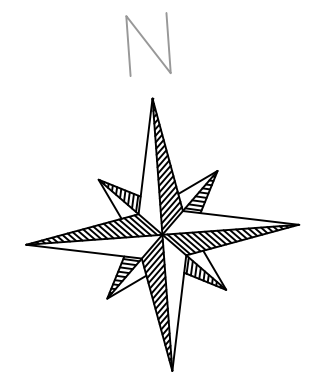
TIE IN DETAIL "A"  
 N.T.S.

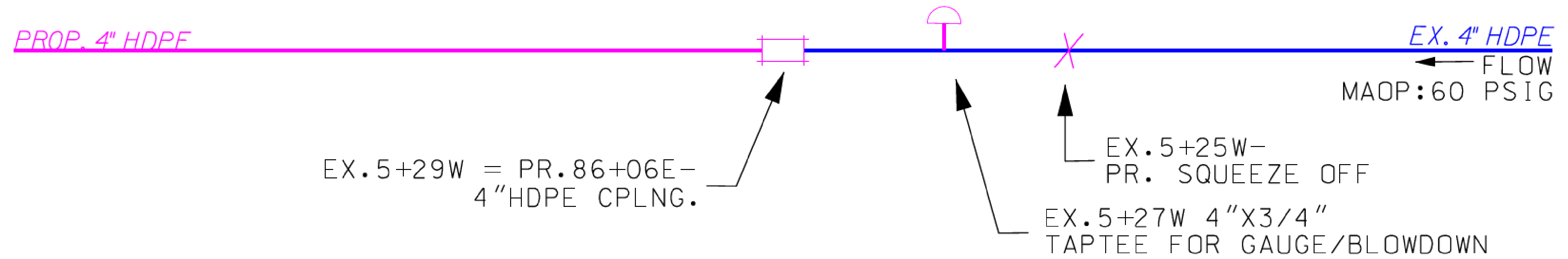
MAPS, DRAWINGS, AND ELECTRONIC DATA (PRODUCTS) ARE CONFIDENTIAL AND PROPRIETARY AND ARE CREATED FOR THE INTERNAL PURPOSES OF ATMOS ENERGY WITH NO IMPLICATION OR REPRESENTATION OF SUITABILITY OR FITNESS FOR ANY INTENDED USE OF THE RECIPIENT. ATMOS ENERGY DOES NOT WARRANT THE ACCURACY OR QUALITY OF SUCH PRODUCTS. THE LOCATIONS SHOWN ARE APPROXIMATIONS AND ARE NOT INTENDED TO SHOW EXACT LOCATIONS. PRODUCTS PROVIDED TO OTHER PARTIES BY ATMOS ENERGY ARE SOLELY FOR THE INTERNAL USE OF THE RECIPIENT, AND THE RECIPIENT AGREES NOT TO DUPLICATE OR DISTRIBUTE THE PRODUCTS OR ANY PORTION OF THE PRODUCTS TO THIRD PARTIES WITHOUT THE PRIOR WRITTEN PERMISSION OF ATMOS ENERGY. THE RECIPIENT FURTHER AGREES TO HOLD HARMLESS AND INDEMNIFY ATMOS ENERGY AGAINST ALL CLAIMS, COSTS, EXPENSES AND DAMAGES RESULTING FROM, PREDICATED UPON, OR IN ANY WAY RELATING TO ANY CLAIM, INCLUDING, BUT NOT LIMITED TO, STRICT LIABILITY, FOR PERSONAL INJURIES, DEATH, PROPERTY DAMAGE, OR ANY OTHER DAMAGES WHATSOEVER, ON ACCOUNT OF ANY PURPORTED DEFECTS, ERRORS, INCONSISTENCIES, OR INACCURACIES IN THE DATA, INFORMATION, OR OTHER PRODUCTS PROVIDED HEREUNDER.

PRELIMINARY AND  
 FINAL SEALS



PROJECT #: XXX.XXXXX
WORK ORDER #: XXXXXXXXXXX
DRAWING #: PDXXXXX
LOCUS #: XXXXXXX
PM: PROJECT_MANAGER
ENG: ENGINEER
DWG BY: DRAWN_BY
UPDATED DATE: 04/17/26





TIE IN DETAIL "B"  
N.T.S.

MAPS, DRAWINGS, AND ELECTRONIC DATA (PRODUCTS) ARE CONFIDENTIAL AND PROPRIETARY AND ARE CREATED FOR THE INTERNAL PURPOSES OF ATMOS ENERGY WITH NO IMPLICATION OR REPRESENTATION OF SUITABILITY OR FITNESS FOR ANY INTENDED USE OF THE RECIPIENT. ATMOS ENERGY DOES NOT WARRANT THE ACCURACY OR QUALITY OF SUCH PRODUCTS. THE LOCATIONS SHOWN ARE APPROXIMATIONS AND ARE NOT INTENDED TO SHOW EXACT LOCATIONS. PRODUCTS PROVIDED TO OTHER PARTIES BY ATMOS ENERGY ARE SOLELY FOR THE INTERNAL USE OF THE RECIPIENT, AND THE RECIPIENT AGREES NOT TO DUPLICATE OR DISTRIBUTE THE PRODUCTS OR ANY PORTION OF THE PRODUCTS TO THIRD PARTIES WITHOUT THE PRIOR WRITTEN PERMISSION OF ATMOS ENERGY. THE RECIPIENT FURTHER AGREES TO HOLD HARMLESS AND INDEMNIFY ATMOS ENERGY AGAINST ALL CLAIMS, COSTS, EXPENSES AND DAMAGES RESULTING FROM, PREDICATED UPON, OR IN ANY WAY RELATING TO ANY CLAIM, INCLUDING, BUT NOT LIMITED TO, STRICT LIABILITY, FOR PERSONAL INJURIES, DEATH, PROPERTY DAMAGE, OR ANY OTHER DAMAGES WHATSOEVER, ON ACCOUNT OF ANY PURPORTED DEFECTS, ERRORS, INCONSISTENCIES, OR INACCURACIES IN THE DATA, INFORMATION, OR OTHER PRODUCTS PROVIDED HEREUNDER.

PRELIMINARY AND  
FINAL SEALS



PROJECT #: XXX.XXXXX
WORK ORDER #: XXXXXXXXXXX
DRAWING #: PDXXXXX
LOCUS #: XXXXXXX
PM: PROJECT_MANAGER
ENG: ENGINEER
DWG BY: DRAWN_BY
UPDATED DATE: 04/17/26

